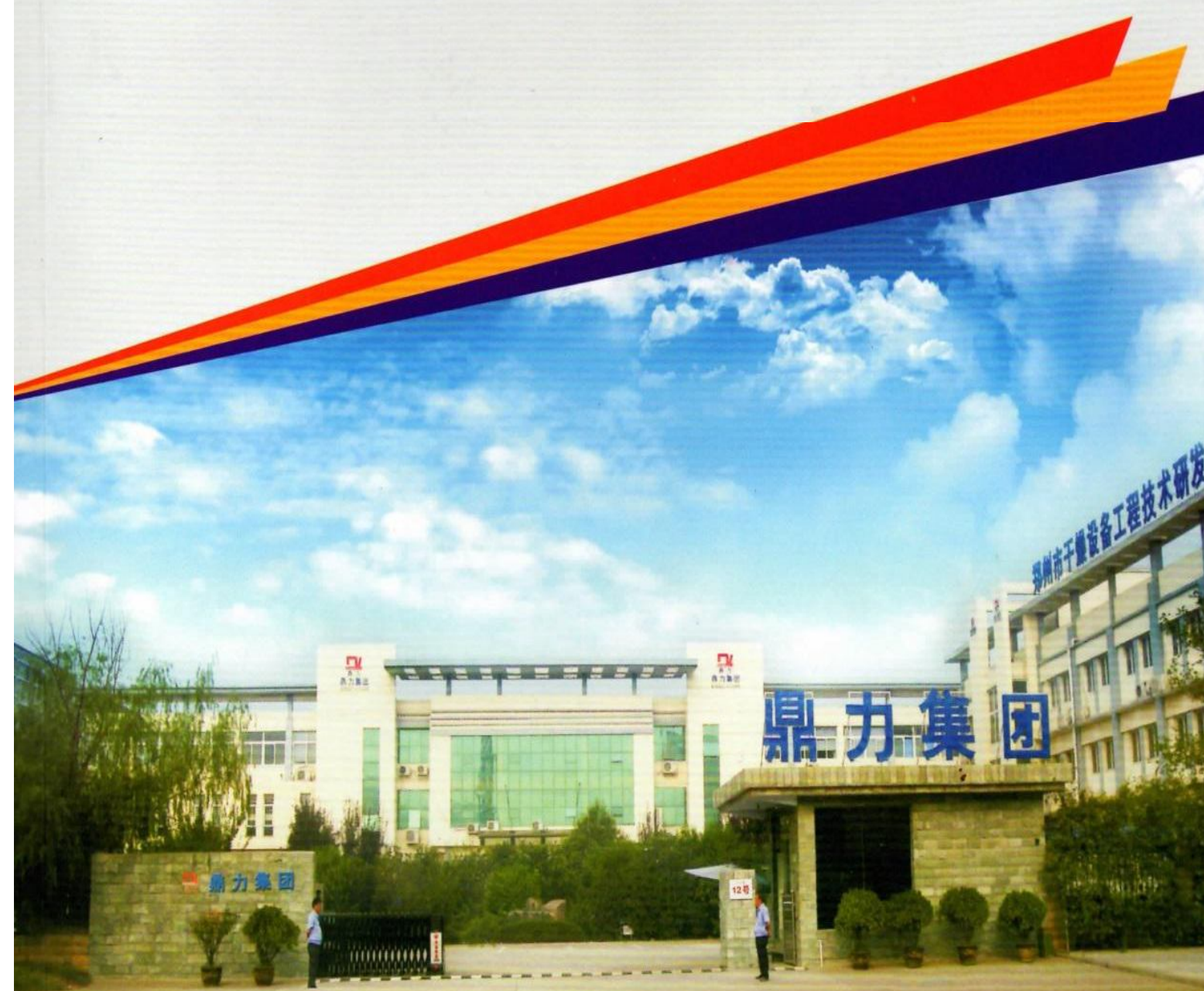


ООО «ТИ-СИСТЕМС» ИНЖИНИРИНГ И ПОСТАВКА ТЕХНОЛОГИЧЕСКОГО ОБОРУДОВАНИЯ
Интернет: www.tisys.ru www.tisys.kz www.tisys.by www.tesec.ru www.ти-системс.рф
Телефоны: +7 (495) 7774788, 7489626, (925) 5007155, 54, 65
Эл. почта: info@tisys.ru info@tisys.kz info@tisys.by



鼎力集团 DINGLI GROUP

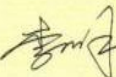
煤泥干燥专家



» 董事长寄语 *The chairman address*



衷心感谢新老客户、社会各界朋友对鼎力集团一如既往的关心和支持！
在过去的岁月中，郑州鼎力集团始终秉承“质量第一，诚信为本，不求最大，只做更优”的鼎力宗旨，大力弘扬“培养无与伦比的专业素养，发掘无法复制的创新能力”的鼎力精神，全面诠释“让客户利益最大化，让员工过上好日子”的鼎力理念，致力追求“永做行业领航者，永做行业第一品牌”的鼎力目标，把专业做成经典，创造了和创造着我国干燥行业的一个个神话：
鼎力集团，我国干燥行业的领航者。
鼎力品牌，我国干燥行业第一品牌。
鼎力技术，与世界尖端技术摩肩接踵。
辉煌的过去只能表明我们的拥有，美好的未来仍需我们鼎力人不懈的追求。在今后的事业中，鼎力人将与广大客户携手并肩，风雨同舟，为实现共同的梦想而努力奋斗。
鼎力集团，不满足让客户满意，唯追求让客户感动。我们将张开热情的臂膀，欢迎世界客商、八方宾朋前来考察、交流和合作，鼎力集团期待您的加盟！

郑州鼎力集团董事长兼总经理： 

My Heartfelt thanks to new and old customers and friends from all walks of life for your consistent care and support to Dingli Group as always.

In the past few years, Zhengzhou Dingli Group has always been adhering to the purpose of quality first, integrity-based, not for the best but for better, vigorously carry forward the spirit of cultivating the unparalleled professionalism, exploring the innovation ability that cannot be reproduced, comprehensively interpret the philosophy of making better life for employees and maximizing customers' benefits. We are committed to the pursuit of goals of making the industry leader and making the industry's first brand. By turning professionalism into a classic, we Zhengzhou Dingli Group has created more and more wondrous achievements in the drying industry of our country.

Zhengzhou Dingli Group is the leader of China's drying industry.

The brand of Zhengzhou Dingli Group is the NO.1 brand in China's drying industry.

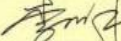
The technology of Zhengzhou Dingli Group can be matched with the cutting-edge technology in the world.

Glorious past only shows what we were, the bright future still needs our unremitting pursuit.

In the future endeavors, we Dingliers are willing to work with our customers to stand together through storm and stress and strive to achieve our shared dream.

Zhengzhou Dingli Group will not be satisfied with our customer satisfaction until we finally make efforts to ensure that our customers are touched.

We Dingliers will extend our warm arms to welcome customers, sincere friends and business partners home and abroad to join us!

Zhengzhou Dingli group chairman and general manager 



Р 目录

RODUCTS CONTENTS



● **董事长寄语** Chairman's message P01

● **画册目录** Album directory P02

● **集团简介** Company introduction P03/04

● **集团文化** Enterprise culture P05/06

● **项目案例** Project case P07/18

P07 广东绿地能源集团 Guangdong green energy group

P08 辽宁阜新集团 Liaoning Of Fuxin group

P09 山东兖矿集团 Shandong Yanzhou Mining Group

P10 甘肃华亭煤业集团 Gansu Huating coal industry group

P11 内蒙古伊东集团 Inner Mongolia Yidong group

P12 内蒙古乌兰集团 Inner Mongolia Ulan group

P13 内蒙古伊泰集团 Inner Mongolia Yitai group

P14 内蒙古纳源煤业集团 Inner Mongolia Nayuan Coal Group

P15 山西阳光发电集团 Shanxi Sunshine Power Company Limited

P16 广西一大矿业集团 The Guangxi Large mining Group

P17 四川黄浦煤业集团 Sichuan Huangpu Coal Mining Group

P18 黑龙江一五一矿业集团 The Heilongjiang one five one Mining industry group

● **产品介绍** Project case P18/28

P18 煤泥烘干系统工艺流程 The process of slime drying system

P19 煤泥烘干系统特点 Coal slime drying the system features

P20 热源系统-煤粉燃烧炉 Combustion furnace heat source system of pulverized coal

P21 热源系统-自动链排炉 Furnace exhaust heat source system - Automatic Chain

P22/23 热源系统-高效沸腾炉 The heat source system - efficient boiling furnace

P24 电控系统-PLC自动控制系统 Automatic control system of electric control system of -PLC

P25/P26 除尘系统-高效旋风除尘器、湿式除尘器 Dust removal system - cyclone dust collector, wet dust collector

P27 除尘系统-气箱脉冲袋式除尘器 Box pulse bag filter dust removal system and a gas

P28 先进的生产设备 Advanced production equipment

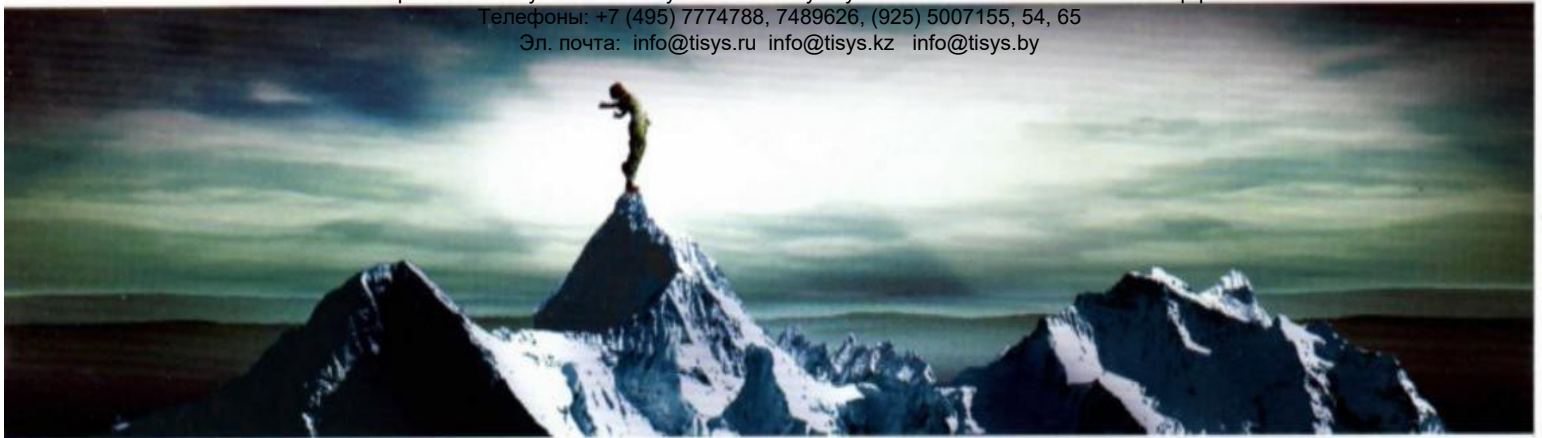
● **考察交流** Review and exchange P29/33

● **集团资质** Group qualification P34

● **集团荣誉** Group for honor P35/37

● **集团风采** Group style P38/41

● **集团专利** The qualification of patent P42/43



国内拥有成功案例最多的企业

集团简介

Group Introduction

郑州市鼎力集团，创建于2005年7月，重组于2013年8月。位于河南省郑州市高新区红
叶路12号。集团拥有郑州鼎力新能源技术有限公司、郑州市鼎力干燥设备有限公司、郑州
九天机械设备有限公司等三家子公司和郑州市工程技术研发中心一个专业科研机构。是以
新能源设备、煤泥煤炭干燥提质设备、高湿物料干燥设备、环保除尘设备开发与研制为主
的专业性企业集团，是干燥设备国内行业中唯一集研发、设计、制作、销售于一体的科技
创新型的企业集团，并率先通过ISO质量管理体系认证。集团是清华大学干燥设备项目合
作单位，河南工业大学产学研基地，中国石油和化学工业联合会干燥技术专业组成员单
位，河南省十佳科技型最具成长力企业和知识产权优势企业。

集团拥有干燥系列、脱水系列、粉碎系列、热工装备系列、电控系列、环保除尘系列
等六大系列130多种具有较高科技含量的系列产品。产品走俏国内，远销世界各地。

集团是国内煤泥干燥行业最大设备制造商，煤泥烘干领域唯一一家具有进出口权的科
技创新型实体，中国煤泥干燥设备煤泥专用热风炉发明者，煤炭工业郑州设计研究院战略
合作伙伴。鼎力干燥在国内煤泥烘干领域综合实力位居行业首位，是中国煤泥干燥设备使
用客户最多的企业，是国内煤泥行业单机处理能力最大的企业，国内大型煤泥烘干机系统
解决方案供应商，同时也是国内煤泥烘干行业最早拥有注册商标证的企业。其拳头产品煤
泥干燥系列产品、新能源设备系列产品是目前中国煤泥干燥行业和新能源领域第一品
牌。

集团致力追求高科技研发和高质量产业：采用CAD、CAM技术，专业从事各种干燥
系统的研发，并与国内多所科研院所合作，搞技术研发，先后发表学术论文30多篇；集团
拥有国家专利160余项，发明专利5项，科研成果4项，科技进步奖1项。研发中心拥有各类
技术人员200余人，其中中级职称40人，高级职称30人，享受国务院特殊津贴专家2人。集团凭
借领先的技术、精良的加工及检验设备、完善的质量管理体系，先进的计算机管理系统和
高素质的职工队伍，监控着产品研制的全进程，并帮助用户对干燥设备进行选型，以便选
用低投入、低能耗、高效率的干燥设备；自2005年以来，集团先后与河南中瑞集团合作，
研制成功国内最大日处理2000吨煤泥烘干设备；与清华大学合作研制城市污泥烘干实验
设备；与安琪酵母股份有限公司合作研制成功细胞壁干燥设备；与海螺集团合作研制酵母液
干燥设备；与蒙牛集团合作研制成功牛粪烘干设备。平煤集团、海螺集团、蒙牛集团、青
啤集团、燕京集团、华润集团等近20家上市公司，以及朝鲜、泰国、韩国、瑞士、俄罗
斯、越南等十余个国家的知名企业，都在使用我集团生产的系列产品。集团拥有合作伙
伴近300家。

长期以来，鼎力集团董事长兼总经理、河南省十佳科技型创新企业家，河南工业大
客座教授、集团创始人李留纪，率领集团高效的管理和研发的精英团队，以“培养无与
伦比的专业素养，发掘无法复制的创新能力的鼎力精神，以“质量第一，诚信为本，不
求最大，只做最优”的鼎力宗旨，以“永做行业领航者，永做行业第一品牌”的鼎力目标，
以“让客户利益最大化，让员工过上好日子”的鼎力理念，着力打造先进的企业文化，不
断促进企业快速稳步的发展。

鼎力形象日新月异，鼎力事业蒸蒸日上。



Group Introduction Zhengzhou Dingli group co., Ltd.

Zhengzhou Dingli Group, founded in July 2005 and restructured in August 2013, is located on No. 12 Hongye Road in the city of Zhengzhou of Henan Province. Our Group has all together four subsidiaries, including Zhengzhou Dingli New Energy Technology Co., Ltd., Zhengzhou Dingli Drying Technology Co., Ltd., Zhengzhou Jiutian Environmental Protection Machinery Co., Ltd. and Zhengzhou Engineering Technology Research and Development Center. We are professional enterprise group that aims at the development of the new energy equipment, high wet material drying equipment and environmental protection dust removing equipment; we are also the only technology innovative enterprise group that makes research and development, design, production, sales integrate into one group. And we are among the first place to pass through the ISO quality management system certification. Our Group is the cooperating partner of drying equipment project of Tsinghua University, the industry-university-research bases of Henan university of Technology, professional members of Drying Technology of China petroleum and chemical industry federation. We are the top ten of the most growing enterprises of science and technology in Henan Province.

Our Group has more than 130 kinds products of high-tech that are divided into six big series, such as drying series, dehydrating series, crushing series, series of thermal equipment, electric control series and the series of environmental protection. Our products sell well at domestic markets but also exported to all over the world.

Our group is the biggest equipment manufacturer which is engaged in the research and development of domestic coal slime drying equipment; we are the only science and technology innovative entity that has the right of import and export in the field of coal slime drying; we are the inventor of the hot blast stove of drying equipment for coal slime in China, as well as the strategic partner of Zhengzhou Design and Research Institute of Coal Industry. The comprehensive strength of Dingli drying technology is among the first place in the field of domestic coal slime drying. Our equipments of coal slime drying serve the largest customers group in China; our enterprise has the largest capacity of a single machine in the domestic coal industry; we are the solution provider for the large domestic coal slime dryer system, as well as the first enterprise with registered trademark certificate in the domestic coal slime drying industry.

Our Group is committed to the pursuit of high-tech research and development and the high quality industry by using CAD, CAM technology to specialize and engage in the research and development of various drying systems; we have joined hands with many domestic scientific research institutes and published more than 30 academic theses. Our Group owns 160 items of national patents, 5 invention patents, 4 items of scientific research, and 1 item of science and technology progress prize. Our research and development center has more than 120 technical personnels of all kinds, among which there are of 40 people of intermediate title, 30 of senior titles, and one expert who can enjoy the state council special allowances. With advanced technology, sophisticated processing and testing equipment, perfect quality management system, advanced computer management system and high-quality staff team, Our Group manages to monitor the product development and the whole process of experiment. In addition, in order to choose a drying equipment of low investment, low energy consumption but high efficiency, we also assist our customers to make the satisfied choice.

Our Group has successfully developed the super drying equipment which can process 2000 tons of coal slime daily with Henan Zhongrui Group since 2005; We have cooperated with Tsinghua University to develop the drying experiment equipment for the urban sludge; We have worked jointly with the Angel Yeast Co., Ltd. and developed the drying equipment for the cell wall successful; We have cooperated with Conch Group (Wenzhou Conch Challenge Biology Co., Ltd.) to develop the drying equipment for the yeast mixture; We have collaborated with Mengniu Dairy to develop the drying equipment the cow dung. We have successively established a network of strategic cooperative partnerships with more than 20 public companies in China, such as Pingdingshan Coal Group Co. Ltd, Conch Group, Mengniu Dairy, Tsingtao Brewery Group, Yanjing Beer Group, China Resources Group, as well as other well-known enterprises in over 10 countries, namely, North Korea, Thailand, South Korea, Switzerland, Russia, Vietnam and so other countries. All of those countries have used our products. Therefore we have reached to as many as 300 business partners.

The founder of our Dingli Group, Mr Li Liuji, chief executive and general manager, one of the Top Ten entrepreneurs of science and technology innovation in Henan Province, adjunct professor of Henan University of Technology and senior engineer, has led efficient elite team of the group management and research and development for a long time. The spirit of our Dingli Group is to cultivate the unparalleled professionalism and explore the innovation ability that cannot be reproduced; the purposes of our Dingli Group are "quality first, integrity-based, better first, biggest second"; the objectives of our Dingli Group are always to be the pilot of this industry and make the first brand of this industry; and our Dingli Group philosophy is to let the customers get the benefit maximization and let our employees live better lives. Therefore, we strive to build advanced enterprise culture and promote steady and rapid development of enterprises.

In a word, our image changes for the better day by day, and our business is flourishing and prosperous with each passing hour.

◆ 八大理念 ◆

Eight Conceptions

➤ 鼎力精神:

The spirit of Dingli Group:

培养无与伦比的专业素养，发掘无法复制的创新能力。
Cultivating the unparalleled professionalism and explore the innovation ability that cannot be reproduced

➤ 鼎力宗旨:

The purposes of our Dingli Group:

质量第一，诚信为本，不求最大，只做更优。
Quality first, integrity-based, better first, biggest second;

➤ 鼎力目标:

The objectives of our Dingli Group:

永做行业领航者，永做行业第一品牌。
Always to be the pilot of this industry and make the first brand of this industry;

➤ 鼎力理念:

The philosophy of Dingli Group:

让客户利益最大化，让员工过上好日子。
Let the customers get the benefit maximization and let our employees live better lives;

➤ 鼎力经营观:

The business concept of Dingli Group:

把专业做成经典。
Make professional a worthy classic;

➤ 鼎力服务观:

The service concept of Dingli Group:

不满足让客户满意，唯追求让客户感动。
Never satisfy ourselves with our customers' satisfaction, Always in the pursuit of moving our customers;

➤ 鼎力人才观:

The talent concept of Dingli Group:

唯才是举，任人唯贤。
Appointing people according to their merits and political integrity .

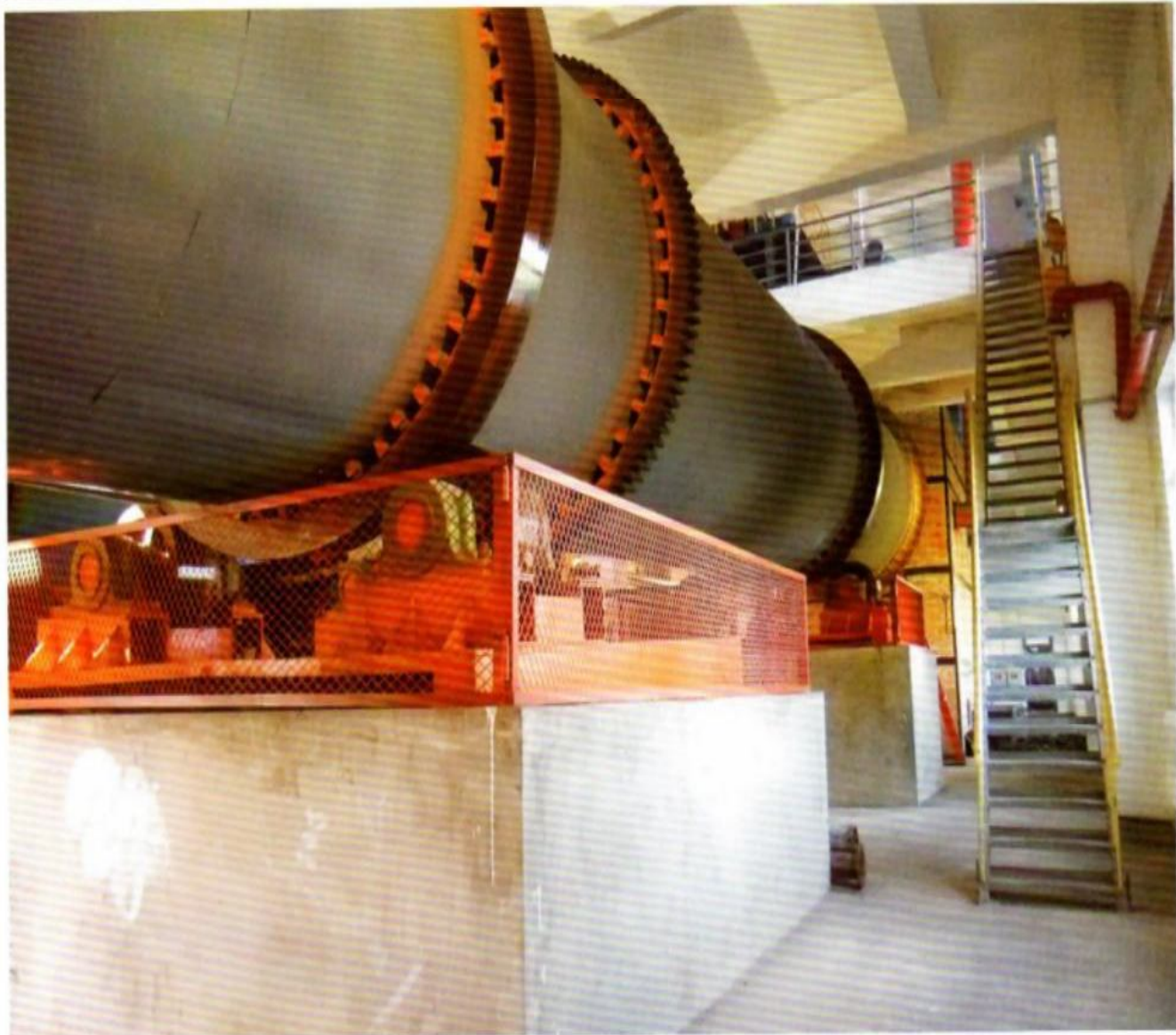
➤ 鼎力价值观:

The enterprise values of Dingli Group:

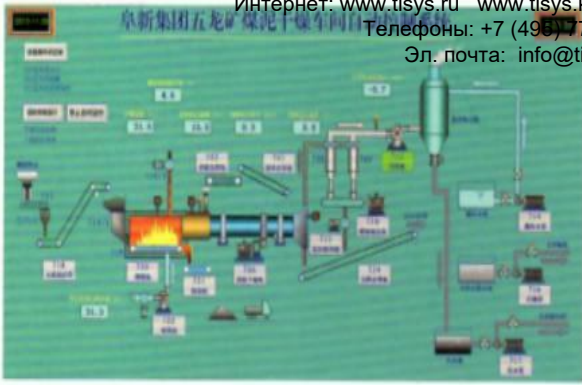
无私奉献，互利共赢。
Selfless dedication to the society, mutual benefit and win-win results.

广东绿地能源集团

Guangdong green energy group



国内拥有成功案例最多的企业



辽宁阜新集团

Liaoning Fuxin Group



煤泥干燥行业领航者

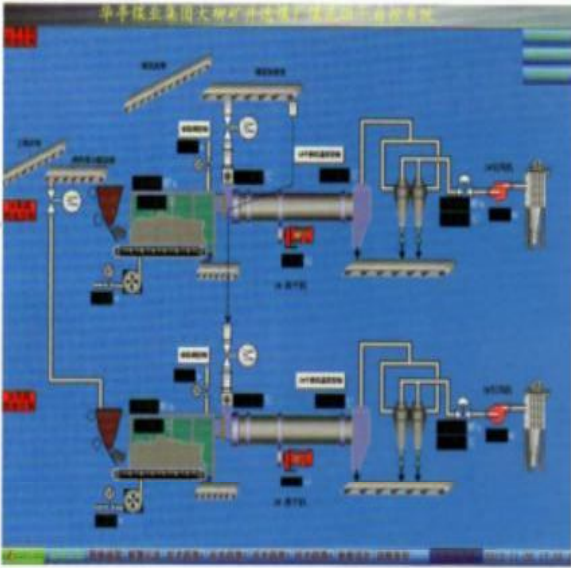


山东兖矿集团 Shandong Yanzhou Mining Group



国内拥有成功案例最多的企业

甘肃华亭煤业集团 Gansu Huating coal industry group



煤泥干燥行业领航者

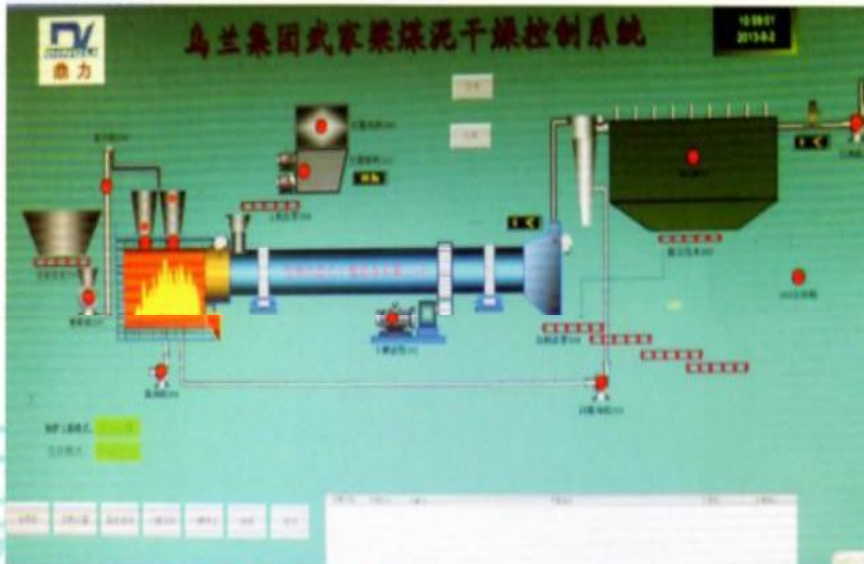


内蒙古伊东集团 Inner Mongolia Yidong Group



国内拥有成功案例最多的企业





煤泥干燥行业领航者

内蒙古乌兰集团

Inner Mongolia Ulan Group

内蒙古伊泰集团 Inner Mongolia Yitai Group



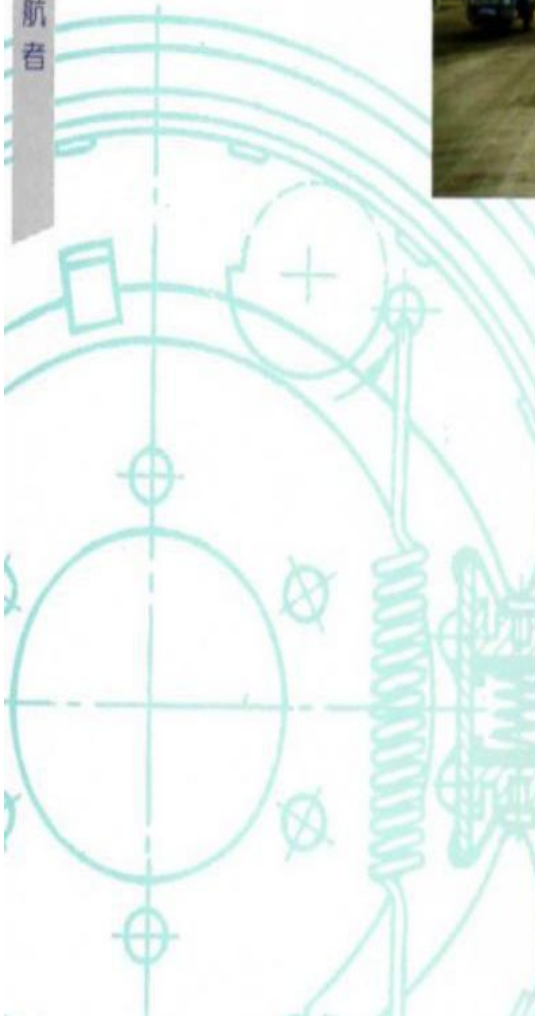
国内拥有成功案例最多的企业



内蒙古纳源煤业集团 Inner Mongolia Nayuan Coal Group



煤泥干燥行业领航者



山西阳光发电集团 Shanxi sunlight power generation Group



国内拥有成功案例最多的企业

广西一大矿业集团 Guangxi Province YiDa mining Group

煤泥干燥行业领航者





四川黄浦煤业集团

Sichuan Huangpu coal industry Group



国内拥有成功案例最多的企业

黑龙江一五一矿业集团
Heilongjiang province one five one Mining Group



煤泥干燥行业领航者

煤泥烘干系统工艺流程

The process of slime drying system

煤泥由于具有一定的粘性，在干燥过程中湿煤泥进入干燥机后分以下几个工作区：一是倒料区，湿煤泥进入此区与高温热风接触迅速蒸发水分，物料在大导角抄板的抄动下，形成不粘便被导入下一个工作区；二是清理区，湿煤泥在此区被抄板抄起形成料幕状态，物料落下时易形成粘附滚筒壁现象，在此区间由于设备设计有清扫装置，清扫装置便十分合理地清扫了内壁粘附的物料，在这个过程中，清扫装置对物料团球结块也起破碎作用，从而增加了热交换面积，提高了干燥速率；三是倾斜扬料板区，湿煤泥在此区已呈低水松散状态，物料在此区已不具有粘附现象，经过热交换后物料达到所要求的水分状态，进入最后的出料区；四是出料区，滚筒在此区不设抄板，物料在此区滚动滑行至排料口，完成整个干燥过程。

Because the coal slime has a certain viscosity, after the drying process of wet coal slime into the drying machine, there are several following workspaces: the first one is the material dumping areas, when the wet coal slime comes into this area, high temperature and hot air quickly evaporate a lot of water, the material is stirred by the shoveling plate in large angle and formed into the non-cohesive coal slime, and then lead into another workspace; The second one is the cleaning-up areas, the wet coal slime in this area is stirred by the shoveling plate and forms into a state of curtain material, the phenomenon that it is so easy to become cohesive in the cylinder wall when the material fall down that a special equipment within the range of the cleaning device is designed to reasonably clean the inner surface adhesion material. In this process, the cleaning device for material balls and agglomerate also plays a role of breaking, thus increasing the heat exchange area and improving the drying rate; The third one is the inclined lifting plate areas, wet coal slime in this area has a low and loose state of water, the material in this area has not sticking phenomenon, after heat exchange materials to achieve the required moisture state, they will be in the final discharging area; The fourth one is the discharging area, expansion cylinder has not a shoveling plate in the region, the material in this area slides and moves to the discharging port to complete the whole drying

煤泥烘干系统特点

Slime drying system

煤泥干燥系统主要由机体、天然气、拖轮装置、挡轮装置、内部特殊打散清理装置、密封装置、传动装置等组成。本设备可根据不同情况，采用不同燃料（如煤炭、重油、煤气或瓦斯）的燃烧室。该机的主要结构特点是物料在干燥系统内行至清理区时能将粘成大块的煤泥打碎，增大物料和热介质的接触面积，并能清扫粘结在扬料板内的粘结物，获得符合要求的粒度、水分的产品。

1. 干燥机抗过载能力强，处理量大，物料消耗少，干燥成本低；
2. 采用顺流干燥方式，烟气与湿物料由同一侧进入干燥机，可以利用高温烟气获得很高的蒸发强度，干燥机出口温度低，热效率高；
3. 可根据不同的物料性质改变运行参数，使物料在干燥机筒体内能够形成稳定的全断面料幕，质热交换更为充分；
4. 新型给料、排料装置，杜绝滚筒干燥机给料堵塞、不连续、不均匀和返料现象，降低了除尘系统的负荷；
5. 新型内部结构，强化了对已分散物料的清扫和热传导作用，消除了筒体内壁的沾粘现象，对物料水分、粘性的适应性更强；
6. 干燥机实现了“零水平推力”大大减少了挡托轮的磨损，筒体运转平稳可靠；
7. 干燥机采用“调心式托轮装置”，使托轮和滚圈的配合永远呈线性接触，从而大大降低了磨损和动力损耗；
8. 可根据用户要求控制产品粒度和水分，干燥煤泥时产品水分可达8%以下，粒度可控制在8mm以下。

Coal slime drying system is mainly composed of the body, natural gas, internal tug device, catch wheel device, special break up cleaning device, sealing device, transmission device, etc. This equipment can be used in different situations, different fuel such as coal, heavy oil, gas, or gas) of the combustion chamber. The main structural features of this machine is that it can break chunks of coal slime if the material is cleaned up in the drying system, which increases the contact area of material and heat medium and clean up the adhesive material in the lifting plate, so that our products are able to meet the requirements of particle size and moisture.

1. Strong overload capacity of the dryer, large capacity, less material consumption, low cost of drying;
2. It adopts downstream drying methods, fume gas and wet material get into the drying machine from the same side, which can take advantage of the high temperature fume gas to obtain high evaporation strength, low outlet temperature of the drying machine and high thermal efficiency.
3. It can change operation parameters according to the different material properties, the material in the dryer cylinder body can form stable whole material curtain and the heat exchange is more adequate;
4. New feeding and discharging device, put an end to the dryer feeding jams, discontinuous and uneven material-returning phenomenon, in order to reduce the load of dust removal system;
5. New type of internal structure strengthens the effect on scattered material cleaning and heat conduction, stained with cohesive phenomenon, eliminates the moisture in the cylinder, and make the sticky materials more flexible;
6. This dryer has achieved the "zero thrust" technology and greatly reduced the weariness of the gear wheel, thus making the operation of the cylinder smooth and reliable;
7. This drying machine adopts "self-aligning roller device", which makes the wheel and roller with a linear contact forever, thus greatly reducing the weariness and power loss;
8. According to user's requirements of the control over the product granularity and moisture, dry coal slime product moisture can reach a level of 8% below, and the particle size can be controlled under 8 mm.

鼎力煤泥专用烘干机设备规格表

Their special drying coal machine equipment specifications

产品 型号	滚筒规格 直径X长度 (m)	煤泥处理量 (T/H)	水分蒸发 (T/d)	设备功率 (Kw)	占地面积 (m ²)
DLMG19165	1.9mX16.5m	300±10%	1.88-3.29	133.75	36X15
DLMG2218	2.2mX18m	500±10%	2.72-3.4	164.65	40X18
DLMG2518	2.5mX18m	700±10%	3.52-4.4	194.25	40X18
DLMG2522	2.5mX22m	700±10%	4.32-5.4	263.1	45X25
DLMG2823	2.8mX23m	1000±10%	7.1-9.94	304.7	50X30
DLMG3426	3.4mX26m	1500±10%	11.8-16.5	442.7	60X35
DLMG4032	4.0mX32m	2000±10%	20.1-28.1	595.4	65X42

热源系统 The heat source system

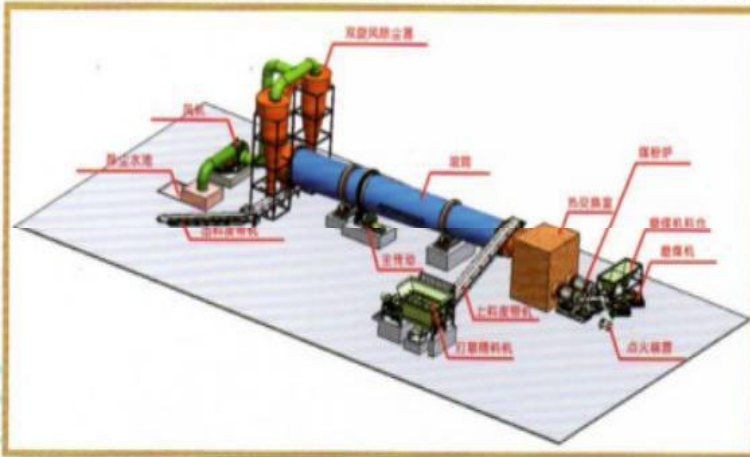
煤粉燃烧炉

JMFL系列间歇旋转式煤粉燃烧装置是我公司自行研制开发的一种新型煤粉燃烧炉，已获国家专利，可广泛用于各种加热炉窑。该装置主要包括四个组成部分：点火油路、MP系列磨煤喷粉机、JMFL系列煤粉燃烧炉、配电柜。该设备由于将块煤破碎成极细颗粒，大大提高了煤的燃烧效率，增加了煤的有效发热量，同烧块煤相比可降低耗煤量的40%-50%。与燃油相比，可降低成本75%左右，经济效益非常显著。该套设备由于采取了炉膛可随时旋转改变炉身角度的方法，不易形成炉渣，克服了以往同类产品存在的对煤质要求严格，易结渣（特别是硫渣），难清渣、操作不便准备清理工作繁重，炉衬砖体易损坏，使用成本高等缺点。真正做到了以煤代油降低成本的目的。

coal dust furnace

JMFL series intermittent rotary pulverized coal combustion device is developed by our company, and this new type of pulverized coal combustion furnace has won the national patent, which can be widely used in all kinds of heating furnaces. This device mainly includes four parts: plug and fuel, MP series grinding coal powder spraying machine, JMFL series of pulverized coal combustion furnace, power distribution cabinet. The equipment grinds the coal into very fine particles, thus greatly improving the coal combustion efficiency and increasing the effective calorific value of coal, compared with burning coal it can reduce about 40%-50% of the coal consumption. Compared with fuel oil, it can reduce the cost by about 75%, whose economic benefit

is very significant. This set of devices adopted the method of rotating the shaft angle of furnace which may happen at any time also it is not easy to form slag, and it overcomes the shortcoming of the strict quality control in coal quality of similar products, such as, easy slagging (especially the sulfur residue), slag removal, uneasy operating inconvenience and heavy burden of cleaning-up, lining brick is easily damaged and the higher cost and so on. In this way, we can really achieve the goal of using coal instead of oil and lowering the costs.



自动链排炉

自动链排炉炉排的外形类似皮带输送机。煤由上煤机送进煤斗，再从煤斗内依靠自重落到煤炉上，随炉排自前向后缓慢移动。没闸板的高度可以调节，以控制煤层的厚度。空气从炉排下面送入，与煤层运动方向相交。煤在炉膛内受到辐射加热，依次完成预热、干燥、着火、燃烧，直至燃尽。灰渣则随炉排移动到后部，经过挡渣板（俗称老鹰铁）落入后部灰渣斗由刮板除渣机排出。



链排炉的种类很多，按其结构形式一般可分为链带式、横梁式、鳞片式、倾斜式和往复式等；其中，链条式炉排和横梁式炉排因其结构的优越性、使用寿命长和操作的高机械化的特点，被广泛应用于煤泥、煤炭干燥领域，并取得了良好的烘干效果。

Travelling Grate Stoker

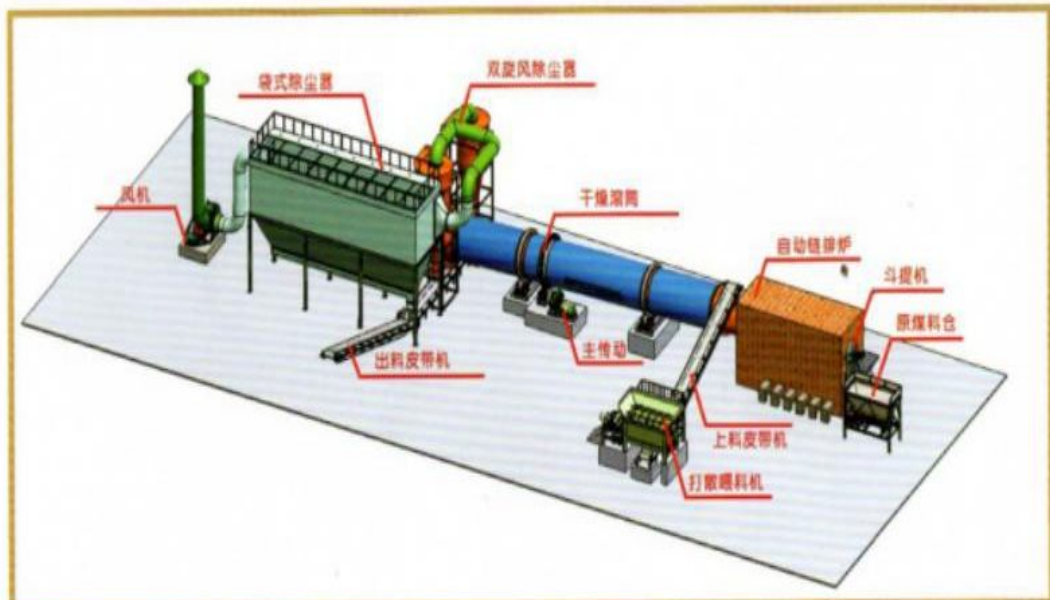
The shape of the automatic chain furnace grate is similar to belt conveyor. Coal goes into the coal scuttle through the coal machine, depending on the weight of itself it lands on coal furnace from the coal scuttle, along with the grate moving slowly forward. The height of flashboard can be adjusted to control the thickness of coal bed. The air gets in from under the grate and connects with the direction of the move of coal seam. By radiation heating, coal in the chamber of a stove or furnace in turn completes the order from the preheating, drying, burning, burning, until it is burnt out. Ashes increase with grate and move to the rear, after slag plate (commonly known as the eagle iron) fall into the back of the ash bucket by scraper slag discharge machine. There are many different kinds of furnace of chains, according to its structure, in general, it can be divided into the chain belt type, beam type, flake type, tilting and reciprocating, etc. Among them, the chain grate and bar grate because of its structure, long service of life and operation of the advantages and the characteristics of high mechanization, is widely used in coal, coal drying areas, which has achieved good drying effect.



往复式炉排结构 Reciprocating Grate Stoker



横梁式炉排结构 Cross Girder Grate Stoker



高效沸腾炉 Efficient boiling furnace

工作原理及应用范围

高效沸腾炉的燃烧方式不同于链排炉和手烧炉，燃料经破碎成10mm以下的颗粒，由调速机械均匀地送入炉膛，可控的高压风通过布风板上的风帽孔射入炉床，燃料在高压风的作用下呈流态化沸腾燃烧，产生高温热烟气，炉内燃烧通过控制给煤、风量、风压、尾气温度，使燃料供热具有良好的控制性；沸腾炉可使用劣质燃料，氮化物生成少。易脱硫，具有显著的环保优势。在节能、环保意识日渐增强的今天，鼓励和推广煤的洁净燃烧技术已列入我国节能法，沸腾炉已广泛应用于冶金、化工、建材、非金属矿等领域的矿渣、粘土、煤粉、复合肥、天然石膏、非金属矿粉等各种原料和物料的烘干、焙烧提供热能。

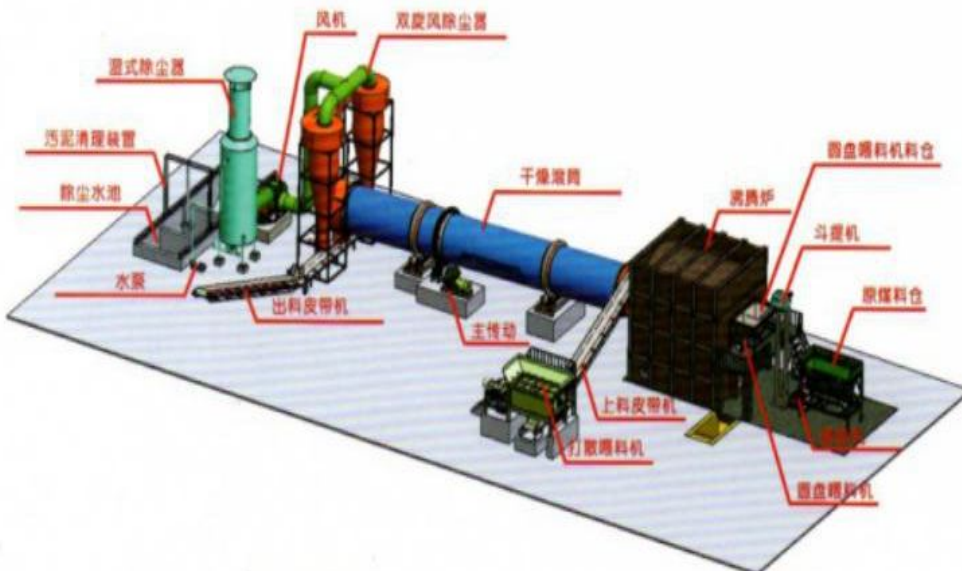
Principle and application scope of work

The combustion mode of high-efficient ebullition furnace is different from the chain furnace and hand fired furnace: The fuel is broken into the particles 10 mm below, and then by adjusting speed machine they are put evenly into the furnace, a controlled high pressure air is lead into the hearth through the ventilation hood holes on the plate, under the high pressure and the action of wind in fluidization fluidized combustion come into being, then the high temperature flue gas is produced, by controlling the coal combustion in the furnace, air volume, air pressure, exhaust temperature, thus making the fuel heating have a better flexibility and controllability; Fluidized furnace can use inferior fuel, in this way it can generate less nitrides. Also, it has significant environmental advantages because of its easy desulfurization, Nowadays as the



煤泥干燥行业领航者

consciousness of energy saving and environmental protection grows, encouraging and promoting clean coal combustion technology have been included in the method of energy saving in our country, fluidized furnace has been widely used to provide heat in a lot of fields, such as metallurgy, chemical industry, building materials, non-metallic mineral slag, clay, coal powder, compound fertilizer, natural gypsum, non-metallic mineral powder and other raw materials and materials drying and roasting.

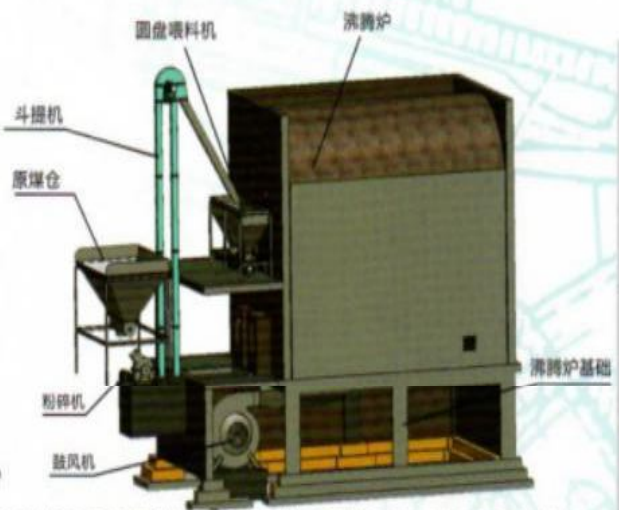


主要性能特点

- ★ 燃料适应性好, 可燃用烟煤、无烟煤及各种劣质燃料, 如煤矸石、石煤、煤渣等;
- ★ 燃料制备简单, 原煤经破碎至10mm以下即可入炉使用;
- ★ 燃烧效率高, 可燃烬细小煤粒, 燃烧充分, 碳粒燃烬度可达98%以上, 热效率95%以上;
- ★ 供热稳定, 温度均匀, 供热调整范围广, 供热温度1000℃以下, 稳定可调;
- ★ 自动溢流出渣, 灰渣可综合利用, 灰渣未经高温熔融活性好, 是水泥的良好掺合料
- ★ 机械化程度高, 热工控制可按用户需要提供手动控制、智能化热工仪表控制盒微机控制多种方式, 操作简单, 维修方便;
- ★ 环保效果好, 排烟中的有害物质少, 氮化物生成量很小, 炉内低成本脱硫, 使燃料中硫以固态方式排出, 减少了SO₂ 的大气污染;
- ★ 可以压火备用, 节省点火燃料和时间, 可压火16-24小时, 最长的可达36小时。

Features

- ★ The fuel has a good adaptability, it can burn bituminous coal, anthracite coal and other inferior fuel, such as coal gangue, coal, coal cinder, etc.;
- ★ The making and preparation fuel are very simple, by crushing the raw coal materials into 10 mm below, and then it can be put into use in the furnace;
- ★ The combustion efficiency is high, the combustible fine grain and the coal burns fully, the rate of carbon fuel can reach more than 98%, therefore the thermal efficiency is above 95%;
- ★ The heating is stable with a average temperature, the heating adjustment range is wide and the heating temperature is below 1000 °C with a adjustable stability;
- ★ The overflow slag is automatic, ash utilization is comprehensive, ash without high temperature melting activity is good, which is a good mixture for cement.
- ★ With a high mechanization degree, according to user's needs, thermal control can provide a variety of ways, including manual control, microcomputer control with a intelligent heat meter control box, so the operation is simple and the maintenance is convenient;
- ★ The environmental protection effect is good, with less harmful material in smoke, nitrides generation is small, cost of desulfurization in the furnace is low, sulfur discharges in the fuel in a solid way, which reduces the amount of atmospheric pollution of SO₂;
- ★ It can be used as a back-up to press fire, to save fuel and ignition time, it can press fire for 16-24 hours a day, the longest amount can reach 36 hours.



国内拥有成功案例最多的企业

技术参数 (Technical)

型号	供热能力 (Kcal/h)	烘干机入口温度	热效率 (%)	初水分 (%)	终水分 (%)
DLG-2.5	2500000	≥700℃	≥93	15-20	≤2
DLG-4.5	4500000	≥700℃	≥93	15-20	≤2
DLG-6.8	6800000	≥700℃	≥93	15-20	≤2
DLG-8.6	8600000	≥700℃	≥93	15-20	≤2
DLG-12.8	12800000	≥700℃	≥93	15-20	≤2
DLG-20	20000000	≥700℃	≥93	15-20	≤2
DLG-30	30000000	≥700℃	≥93	15-20	≤2
DLG-40	40000000	≥700℃	≥93	15-20	≤2
DLG-60	60000000	≥700℃	≥93	15-20	≤2

电控系统 Electric control system



煤泥干燥行业领航者

PLC自动控制系统 PLC automatic control system

整个系统自动控制使用PLC控制。实现所有设备集中连锁启/停控制，实现设备的就地和远方手动操作功能。操作台设有手动与自动控制两种功能转换开关，自动控制时按逆煤流方式启动，顺煤流方式停止的程序进行。各设备之间启动间隔时间可调。

The automatic control of the whole system uses the PLC control. In this way, all equipment can be realized through being centralized start/stop control, achieve the function of equipment on-site and remote manual operation. Work station is equipped with two kinds of function switches: automatic and manual control, automatic control starts according to the inverse way of coal flow, and it stops along the way of coal flow procedures. Starting time interval between each device is adjustable.



高效旋风除尘器 High Efficiency Cyclone Collector:

设备特点及用途 Characteristics of the equipment and the use of

CX型高效旋风除尘器主要适用于含有干燥的、非纤维性物料粉尘的气体净化, 以及对有价值的粉尘进行回收。

结构特点 design feature

结构简单、外锥体收缩角较小、排气管呈锥形筒内设反射屏。本除尘器具有处理能力大、收尘效率高、设备阻力低于扩散式旋风除尘器的优点。在入口浓度和粉尘粒度变化较大时, 除尘效率波动较小。因此, 它具有较广泛的适用性。在煤泥烘干生产中, 它与烘干机配套使用取得显著收尘效果。

CX type high efficiency dust collector is mainly suitable for the purification of the dry and non-fibrous material dust gas, as well as to the collection of valuable dust. Simple structure, a smaller contract angle of the outer cone and a cone-shaped exhaust tube with reflective screen. The dedusting equipment has a large capacity, high dust collecting efficiency, equipment resistance is lower than the advantages of dispersive cyclone. Large changes in inlet concentration and particle size and dust removal efficiency is less volatile. Therefore, it has a wider applicability. In coal slime drying production, it obtains the remarkable effect of dust collecting with the dryer.



湿式除尘器

CSG型除尘器是在同一塔体内将冲击水浴除尘器和湿式过滤钢网层除尘器串联在一起构成。除尘器运行时，含尘气流以一定的速度经设备中设置于塔体中央的风管冲入水中，并以一定的空塔气流速度反上，在水中形成鼓泡或泡沫，将气流中的尘粒捕集下来，经冲击水浴除尘初级净化后的含尘气体，以较低速度、逆流方向通过湿式钢网。湿式钢网除尘是利用不锈钢网作过滤层，并连续不断地向过滤层喷射水雾，使钢网过滤盒水膜除尘两种作用综合在一起，以达到提高除尘效率，清洗捕集的粉尘和防止粉尘二次飞扬的目的。这种除尘器可在矿山、陶瓷、印染、铸造、耐火材料、锅炉等行业作除尘及率毒之用。

Wet Type Dust Collectorr

CSG type dust collector will impact water bath dust remover and wet filter in the same tower with the stencil layer precipitator.lector is running, dusty air will be blown into the wind pipe at a certain speed by the equipment set up in the middle of the tower, and with a certain amount of empty tower air going upwards, bubbles or foam in the water can form into being, and then the dust particles in the air are trapped, after impacting water bath dust, the removal of primary purification of dust and gas flow in the countercurrent direction through the wet stencil.Wet stencil dedust is to use the stainless steel wires as the filter layers, and continuously to spray mist on the filtering layers to make the stencil water film and dust removal filter work together, in order to improve the efficiency of dust removal, cleaning the dust collector and the purpose of preventing secondary dust float in the air. This kind of dust collector can be in mine, ceramics, dyeing and printing, casting, refractory, boiler and other industries for dust removal and the purposes of sterilizing.



气箱脉冲袋式除尘器 Air box pulse bag type dust collector

设备说明

DLCC系列气箱脉冲袋式除尘器是集分室反吹和喷吹脉冲袋式除尘器的优点为一体，克服了分室反吹的清灰动能不足，喷吹脉冲的清灰与过滤同时进行的缺陷，扩大了袋式除尘设备的应用范围。该产品集国内外同类产品的优点，结合我司环保专利技术，有效地提高了气箱脉冲袋式除尘器的除尘效率及运行可靠性，延长了滤袋的使用寿命，降低了操作人员的劳动强度，成为企业环保环境的理想产品。

DLCC series air box pulse bag filter is the collection chamber blow and injection pulse bag filter as a whole, the advantages of overcoming the chamber blow the dust kinetic energy is insufficient, the ash removal and filtration of injection pulse defects at the same time, expand the application range of bag dust removal equipment. This product combines the advantages of similar products at home and abroad, combined with our patented technology of environmental protection, effectively improve the air box pulse bag filter dust removal efficiency and operation reliability, prolong the service life of filter pocket, reduces the labor intensity of operators and become an ideal green environmental products.

产品特点

- 脉冲离线清灰，除尘效率高达99.99%以上，粉尘无二次吸附，特别适用于高弄到烟气。
- 利用高温烟气反吹，有效防止结露，糊袋现象。
- 新型易清灰滤料使用，可靠的烟气温度跟踪系统，能适应各种烟气条件。
- 全自动电脑控制，操作简便，可靠性好。
- 气箱式结构，降低了局部阻损，并免除了滤袋安全不便等问题。



国内拥有成功案例最多的企业

Product features

- Pulse dust removal off-line, dust removal efficiency is as high as 99.99% above, no secondary dust adsorption, especially suitable for flue gas.
- Using the anti-draught of the high temperature flue gas to effectively prevent the phenomenon of dewing and pasting bag.
- New model is easy to used as dust collector or filter, reliable tracking system of flue gas temperature and it can adapt to all kinds of flue gas condition.
- Fully automatic computer control, simple operation, good reliability.
- Air chamber structure reduces the local resistance loss, and removes itself from the filter bag safety and inconvenience problems.

DLCC系列气箱式脉冲式除尘器

型号	SLQM-3	SLQM-4	SLQM-8	SLQM-4	SLQM-7	SLQM-9	SLQM-18	SLQM-24	SLQM-28
技术参数	x32-A	x64-A	x64-A	x96-A	x96-A	x96-A	x126-B	x126-B	x126-B
处理风量 (m ³ /h)	6900	17800	35700	26800	46800	60100	201900	269100	314000
过滤风速 (m/min)	0.8-1.2								
总过滤面积 (m ²)	93	248	496	372	650	836	2804	3738	4361
除尘器室数 (个)	3	4	8	4	7	9	18	24	28
滤袋总数 (个)	96	256	512	384	672	864	2304	3072	3584

先进的生产设备

Advanced production equipment

近年来,集团为提高产品质量,十分重视技术投资。融资近百万元,先后购置了大型数控等离子/火焰切割机、逆变式埋弧焊机等十数台大、中型工艺先进的高科技生产加工设备,有效地提高了效能,生产工艺和产品质量连年梯次上升:煤泥烘干系列产品作为公司传统的拳头产品,仍然一家独大,稳做行业第一品牌;高湿物料干燥设备、环保除尘等其他系列产品,持续热销,市场份额连年扩大,笑傲江湖;新能源设备异军突起,独步市场,发展神速,已成为集团新的产业支柱。

In recent years, in order to improve the quality of our products, Dingli Group has attached great importance to investment in technology. Financing nearly ten thousand yuan, we has purchased a large CNC plasma/flame cutting machine, inverter type submerged arc welding machine and other ten big, medium-sized technology advanced high-tech production and processing equipment in order of urgency, which effectively improves the efficiency of the production process and product quality in successive years, that is, as the traditional fist products company our coal slime drying series products still dominate in this field, we are still the first brand of the industry; High humidity material drying equipment, environmental protection dust collectors and other series of products continue to sell well, to expand our market shares have expanded greatly and thrived year after year; In the global market of new energy equipment industry, we have developed rapidly to become a major force and new industrial pillars for the Dingli Group's economic growth.

Hs1000 逆变式埋弧焊机
Inverter type submerged arc welding machine



QC12Y-4X6000数控剪板机
CNC shearing machine



WC67Y-160T/6000 数控折弯机
CNC bending machine



YH-300DHD 数控等离子/火焰两用切割机
CNC plasma/flame and cutting machine

学术交流 Academic exchanges



国内拥有成功案例最多的企业

图①集团董事长兼总经理李留纪被河南工业大学机电工程学院特聘为兼职教授;

图②集团特聘干燥专家董铁有教授为技术顾问。

图③集团特聘干燥专家王喜中为技术顾问，图为李总和专家的合影;

图④集团特聘褐煤提质专家张殿奎先生任技术副总。

Fig.①Group Chairman and general manager Li Liuji is College of mechanical engineering of Henan University of Technology distinguished professor;

Fig.②Group special drying expert Professor Dong Tieyou for the technical adviser.

Fig.③Group special drying expert Wang Xizhong for technical adviser. Photo graph for Lee sum of experts;

Fig.④The group invited lignite quality experts as technical vice president.

国际交流 (一) International Exchange

煤泥干燥行业领航者



1澳大利亚 2阿根廷 3俄罗斯 4泰国

Fig. 1 Australia; Fig. 2 Argentina; Fig. 3 Russia; Fig. 4 Thailand;

国内拥有成功案例最多的企业



5乌兹别克斯坦

Fig. 5 Uzbekistan

6俄罗斯

Fig. 6 Russia;

7马来西亚

Fig. 7 Malaysia;

8日本

Fig. 8 Japan;

9德国

Fig. 9 Germany;

10斯洛文尼亚

Fig. 10 Slovenia

国际交流 (二) International Exchange

煤泥干燥行业领航者



1



2



3



4



9



10

1乌兹别克斯坦

Fig. 1 Uzbekistan;

2澳大利亚

Fig. 2 Australia;

3印度

Fig. 3 India;

4俄罗斯

Fig. 4 Russia

5乌干达

Fig. 5 Uganda;

6俄罗斯

Fig. 6 Russia;



5



6



7



8



11



12

国内拥有成功案例最多的企业

7台湾地区
Fig. 7 Taiwan;

8新加坡
Fig. 8 Singapore

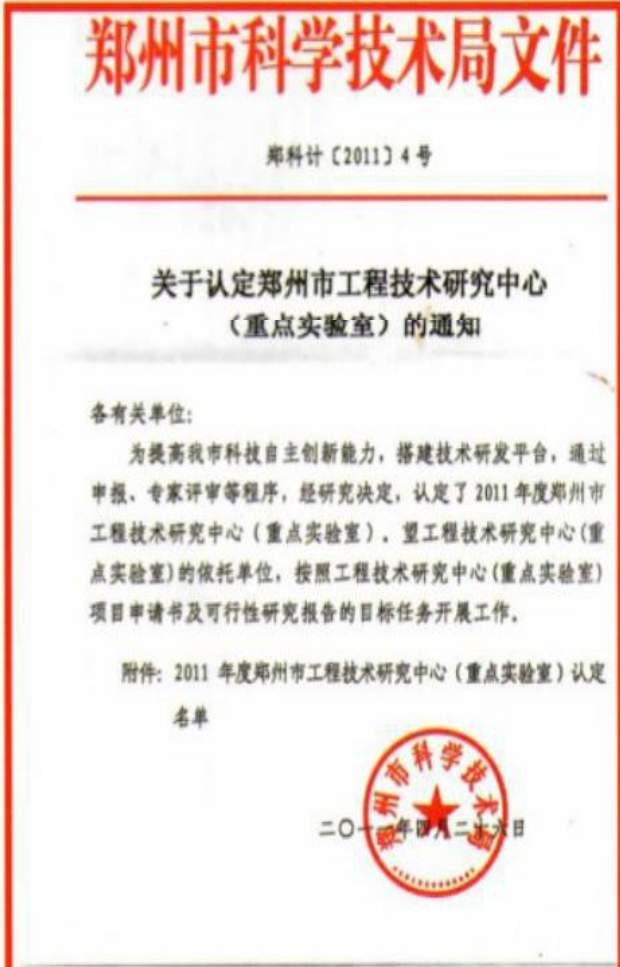
9东南亚
Fig. 9 Southeast Asia

10马来西亚
Fig. 10 Malaysia

11 印度尼西亚
Fig. 11 Indonesia

12越南
Fig. 12 Vietnam

集团荣誉 (一) Honor group (a)



附件

2011年度郑州市工程技术研究中心(重点实验室)认定名单

序号	工程技术研究中心(重点实验室)名称	依托单位	主管部门	备注
1	郑州市量子化设计工程技术研究中心	河南百年泰尔生物工程有限公司	郑州市	
2	郑州市数控磨削工程技术研究中心	河南豫泰数控技术有限公司	郑州市	
3	郑州市干燥设备设计工程技术研究中心	郑州市鼎力干燥设备有限公司	郑州市	
4	郑州市干燥设备设计工程技术研究中心	郑州市鼎力干燥设备有限公司	郑州市	
5	郑州市干燥设备设计工程技术研究中心	郑州市鼎力干燥设备有限公司	郑州市	
6	郑州市干燥设备设计工程技术研究中心	郑州市鼎力干燥设备有限公司	郑州市	
7	郑州市干燥设备设计工程技术研究中心	郑州市鼎力干燥设备有限公司	郑州市	
8	郑州市干燥设备设计工程技术研究中心	郑州市鼎力干燥设备有限公司	郑州市	
9	郑州市干燥设备设计工程技术研究中心	郑州市鼎力干燥设备有限公司	郑州市	
10	郑州市干燥设备设计工程技术研究中心	郑州市鼎力干燥设备有限公司	郑州市	
11	郑州市干燥设备设计工程技术研究中心	郑州市鼎力干燥设备有限公司	郑州市	
12	郑州市干燥设备设计工程技术研究中心	郑州市鼎力干燥设备有限公司	郑州市	
13	郑州市干燥设备设计工程技术研究中心	郑州市鼎力干燥设备有限公司	郑州市	
14	郑州市干燥设备设计工程技术研究中心	郑州市鼎力干燥设备有限公司	郑州市	
15	郑州市干燥设备设计工程技术研究中心	郑州市鼎力干燥设备有限公司	郑州市	
16	郑州市干燥设备设计工程技术研究中心	郑州市鼎力干燥设备有限公司	郑州市	
17	郑州市干燥设备设计工程技术研究中心	郑州市鼎力干燥设备有限公司	郑州市	
18	郑州市干燥设备设计工程技术研究中心	郑州市鼎力干燥设备有限公司	郑州市	
19	郑州市干燥设备设计工程技术研究中心	郑州市鼎力干燥设备有限公司	郑州市	
20	郑州市干燥设备设计工程技术研究中心	郑州市鼎力干燥设备有限公司	郑州市	
21	郑州市干燥设备设计工程技术研究中心	郑州市鼎力干燥设备有限公司	郑州市	
22	郑州市干燥设备设计工程技术研究中心	郑州市鼎力干燥设备有限公司	郑州市	
23	郑州市干燥设备设计工程技术研究中心	郑州市鼎力干燥设备有限公司	郑州市	
24	郑州市干燥设备设计工程技术研究中心	郑州市鼎力干燥设备有限公司	郑州市	
25	郑州市干燥设备设计工程技术研究中心	郑州市鼎力干燥设备有限公司	郑州市	
26	郑州市干燥设备设计工程技术研究中心	郑州市鼎力干燥设备有限公司	郑州市	
27	郑州市干燥设备设计工程技术研究中心	郑州市鼎力干燥设备有限公司	郑州市	
28	郑州市干燥设备设计工程技术研究中心	郑州市鼎力干燥设备有限公司	郑州市	
29	郑州市干燥设备设计工程技术研究中心	郑州市鼎力干燥设备有限公司	郑州市	
30	郑州市干燥设备设计工程技术研究中心	郑州市鼎力干燥设备有限公司	郑州市	



国内拥有成功案例最多的企业

集团荣誉 (二) Honor group (two)



煤泥干燥行业领航者

爱心捐助
For love



郑州鼎力干燥设备有限公司“鼎力”奖学金捐赠暨颁奖仪式合影



煤泥干燥行业领航者

- ①在河南工大设立“鼎力奖学金”100万元;
- ②“鼎力”奖学金捐赠及颁奖仪式;
- ③2013学年度又一批“鼎力奖学金”获奖者获奖;
- ④汶川地震捐款;
- ⑤集团向贫困农村小学捐赠校车5辆, 总价值100万元;

Fig. ①The establishment of 'Dingli scholarship' 1000000 yuan at the Henan University of Technology;
Fig. ②'Dingli' Scholarship donation and awards ceremony
Fig. ③The 2013 school year and a number of 'Dingli scholarship' Awards
Fig. ④The Wenchuan earthquake donation
Fig. ⑤Group to poor rural primary school donated school bus 5 carstotal value 1000000 yuan



4

国内拥有成功案例最多的企业



5

文化活动 Cultural activities

煤泥干燥行业领航者



鼎力集团第一届职工运动会



国内拥有成功案例最多的企业

集团专利证书 (160余项)

Zhengzhou Dingli group Limited by Share Ltd case

专利名称	申请公司	申请号	专利类型	申请状态
带式液压脱水机	郑州市鼎力干燥设备有限公司	专利号:ZL 200820071156.9	实用新型	饲料
啤酒糟脱水干燥设备	郑州市鼎力干燥设备有限公司	专利号:ZL 200920089747.3	实用新型	饲料
螺旋挤压脱水机	郑州市鼎力干燥设备有限公司	专利号:ZL 200920089748.8	实用新型	饲料
三层回转滚筒干燥机	郑州市鼎力干燥设备有限公司	专利号:ZL 200920089749.2	实用新型	饲料
啤酒酵母干燥机	郑州市鼎力干燥设备有限公司	专利号:ZL 200920090842.5	实用新型	饲料
双卧轴打散喂料机	郑州市鼎力干燥设备有限公司	专利号:ZL 201120061669.3	实用新型	煤泥褐煤
煤泥干燥装置	郑州市鼎力干燥设备有限公司	专利号:ZL 201120061679.7	实用新型	煤泥
煤泥专用热风炉	郑州市鼎力干燥设备有限公司	专利号:ZL 201120061667.4	实用新型	煤泥
煤泥专用热风炉	郑州市鼎力干燥设备有限公司	专利号:ZL 201110057506.2	发明	煤泥
煤泥滚筒烘干机无动力螺旋推进器进料装置	郑州市鼎力干燥设备有限公司	专利号:ZL 201120498686.3	实用新型	煤泥
煤泥滚筒烘干机防漏料漏气密封装置	郑州市鼎力干燥设备有限公司	专利号:ZL 201120498677.4	实用新型	煤泥
新型煤泥滚筒烘干机	郑州市鼎力干燥设备有限公司	专利号:ZL 201120498662.8	实用新型	煤泥
一种继续热发生炉	郑州市鼎力干燥设备有限公司	专利号:ZL 201220420688.5	实用新型	煤泥褐煤
一种继续热发生炉	郑州市鼎力干燥设备有限公司	专利号:ZL 201210302219.8	发明	煤泥褐煤
一种煤泥粉尘回烧炉设备	郑州市鼎力干燥设备有限公司	专利号:ZL 201220430309.0	实用新型	煤泥
一种闭风自动翻板卸料阀	郑州市鼎力干燥设备有限公司	专利号:ZL 201220420694.0	实用新型	煤泥褐煤
一种煤泥滚筒烘干机分级扬料装置	郑州市鼎力干燥设备有限公司	专利号:ZL 201220420771.2	实用新型	煤泥褐煤
内部设置有拉杆的大吨位料仓	郑州市鼎力干燥设备有限公司	专利号:ZL 201220420930.9	实用新型	煤泥褐煤
带加强筋的料仓	郑州市鼎力干燥设备有限公司	专利号:ZL 201220420705.5	实用新型	煤泥褐煤
煤泥滚筒烘干机自动清扫装置	郑州市鼎力干燥设备有限公司	专利号:ZL 201220420707.4	实用新型	煤泥
大零部件装配静动力螺旋压力机	郑州市鼎力干燥设备有限公司	专利号:ZL 201220420948.9	实用新型	煤泥褐煤
转动滚筒入火入料端口静态节能联接装置	郑州市鼎力干燥设备有限公司	专利号:ZL 201220420794.3	实用新型	煤泥褐煤
滚筒烘干机大齿轮与滚筒的弹性调整装置	郑州市鼎力干燥设备有限公司	专利号:ZL 201220420847.1	实用新型	煤泥褐煤
滚筒烘干机筒体保温装置	郑州市鼎力干燥设备有限公司	专利号:ZL 201220420758.7	实用新型	煤泥褐煤
带有导流装置的滚筒式烘干设备	郑州市鼎力干燥设备有限公司	专利号:ZL 201220420757.2	实用新型	煤泥褐煤
打散喂料机进料保护装置	郑州市鼎力干燥设备有限公司	专利号:ZL 201220420967.1	实用新型	煤泥褐煤
气瓶保护罩	郑州市鼎力干燥设备有限公司	专利号:ZL 201220420759.1	实用新型	煤泥褐煤
打散喂料轴承密封装置	郑州市鼎力干燥设备有限公司	专利号:ZL 201220420719.7	实用新型	煤泥褐煤
双轴螺旋挤压式脱水机	郑州市鼎力干燥设备有限公司	专利号:ZL 201220430287.8	实用新型	饲料
三层滚筒烘干机的滚筒	郑州市鼎力干燥设备有限公司	专利号:ZL 201220430294.8	实用新型	饲料
一种滚筒烘干设备用的尾气和物料的分选装置	郑州市鼎力干燥设备有限公司	专利号:ZL 201220430243.5	实用新型	煤泥褐煤
一种去元化粉碎增效节能装置	郑州市鼎力干燥设备有限公司	专利号:ZL 201220429559.2	实用新型	煤泥褐煤
一种三层滚筒烘干装置	郑州市鼎力干燥设备有限公司	专利号:ZL 201220430242.0	实用新型	煤泥
一种煤泥粉尘回烧炉燃烧装置	郑州市鼎力干燥设备有限公司	专利号:ZL 201220429422.7	实用新型	煤泥褐煤
一种煤泥粉尘回烧炉燃烧装置	郑州市鼎力干燥设备有限公司	专利号:ZL 201210308996.3	发明	煤泥褐煤
三层滚筒烘干机四驱动装置	郑州市鼎力干燥设备有限公司	专利号:ZL 201220430267.0	实用新型	煤泥
转角端效节能皮带机	郑州市鼎力干燥设备有限公司	专利号:ZL 201220430217.2	实用新型	煤泥褐煤
一种水幕除尘装置	郑州市鼎力干燥设备有限公司	专利号:ZL 201220430195.X	实用新型	煤泥褐煤
一种用于三通管体出料流量控制的机构	郑州市鼎力干燥设备有限公司	专利号:ZL 201220430256.2	实用新型	煤泥
(未完待续...)				

专利证书样本选 (待续)

Patent certificate sample selection (to be continued)

					
ZL 2009 1 0089749.2	ZL 2011 2 0061669.3	ZL 2012 2 0430287.8	ZL 2011 1 0057506.2	ZL 2008 1 00871156.9	ZL 201120061669.3
					
ZL 201120061667.4	ZL 201110057506.2	ZL 201220420930.9	ZL 201120498686.3	ZL 201120498677.4	ZL 201120498662.8
					
ZL 201220420688.5	ZL 201210302219.8	ZL 201220430309.0	ZL 201220420694.0	ZL 201220420771.2	ZL 201120061669.3
					
ZL 201220420705.5	ZL 201220420707.4	ZL 201220420948.9	ZL 201220420794.3	ZL 201220420847.1	ZL 201220420758.7
					
ZL 201220420757.2	ZL 201220420967.1	ZL 201220420759.1	ZL 201220420719.7	ZL 201220430243.5	ZL 201220429559.2

国内拥有成功案例最多的企业

行业内率先通过ISO9001质量管理体系认证
清华大学干燥设备项目合作单位
中国石油和化学工业联合会干燥技术专业组成单位
河南省十佳科技型最具成长力企业
河南工业大学产学研基地
中国煤泥干燥设备煤泥专用热风炉发明者
煤炭工业郑州设计研究院战略合作伙伴
河南工业大学干燥与脱水设备研究基地
郑州市知识产权优势企业
中国煤泥干燥行业第一品牌
国内煤泥干燥行业最大设备制造商
煤泥烘干领域唯一一家具有进出口权的科技型企业
中国煤泥干燥设备使用客户最多的企业
国内煤泥行业单机处理能力最大的企业
国内煤泥烘干行业最早拥有注册商标的企业

We have taken the lead through the ISO quality management system certification enterprises within the industry;

We are the cooperation unit of drying equipment project of Tsinghua university;

We are the professional unit of drying technology from China petroleum and chemical industry federation;;

We are the top ten scientific and technological enterprise with the most growing competence in Henan province;

We are the base of production, education and research in Henan University of Technology;

we are the inventor of the hot blast stove of drying equipment for coal slime in China;

We are the strategic partner of Zhengzhou Design and Research Institute of Coal Industry;

We are the drying and dewatering equipment research base in Henan University of Technology;

We are the preponderant enterprise with our own intellectual property;

We are the first brand of Chinese coal slime drying industry;

We are the largest equipment manufacturers domestic coal slime drying industry;

We are the only one of science and technology enterprises with import and export rights in the field of coal slime drying industry;

We are the enterprise that our coal slime drying equipments have the largest range of customers in China;

Our enterprise has the largest capacity of a single machine in the domestic coal industry;

We are among the the earliest enterprises which have owned a registered trademark in domestic coal slime drying industry;



